

B400R: Configuration menu, resetting the last error and setting the clock

The turn-push knob can be used to access sub-menus in which it is possible to

- set machine configurations
- set the clock
- delete the last error in the display and the error overview

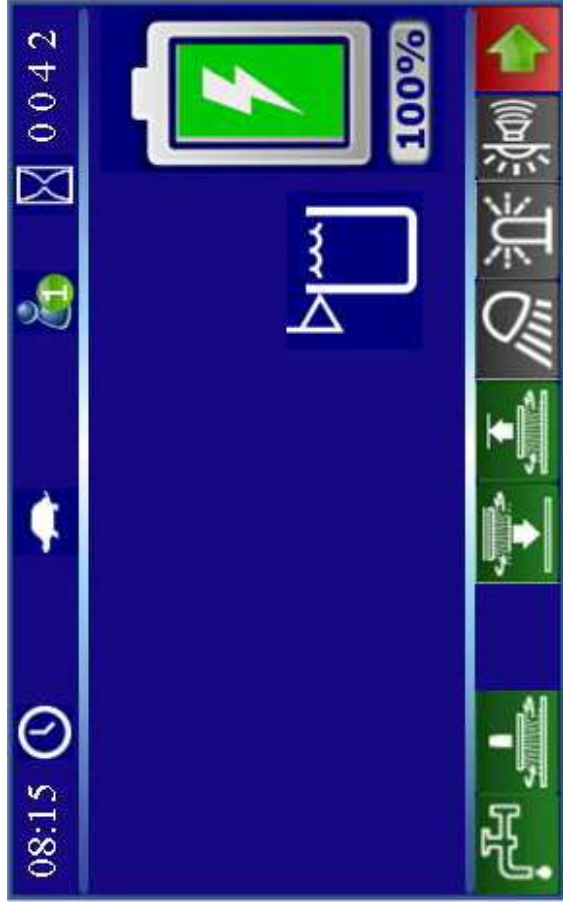
Select the sub-menus:

In the main display screen, use the turn-push knob to select the red button with the green arrow and actuate it by pressing the turn-push knob. The display screen jumps into the sub-menu on the operating hours meter page.

Use the turn-push knob to select the desired menu item and actuate it by pressing the turn-push knob.

- Time/Date setting
- Configuration menu
- Error memory for resetting the last error

Depending on the equipment of the machine and the up to date software version, the content and appearance of this windows may vary.



“Return” key / Turn-push knob



“Menu selection” softkey for selecting the sub-menus.

The sub-menu of the operating hours appears and the select buttons are displayed on the left-hand side (with yellow border for selection).

Go back to the main menu using

- the return key on the keypad
- or
- the home button (softkey) on the display panel

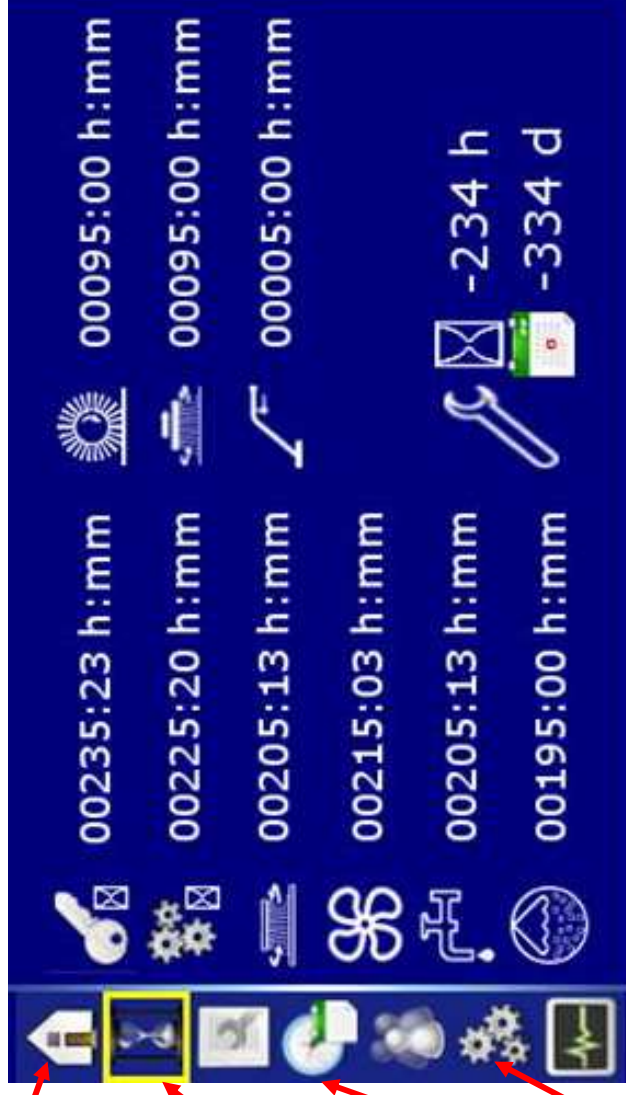
“Menu selection” softkey for selecting the sub-menus.

The sub-menu of the operating hours appears and the select buttons are displayed on the left-hand side (with yellow border for selection). The individual menus can be selected using the turn-push knob.

Time setting menu

Configuration setting menu

Service messages menu



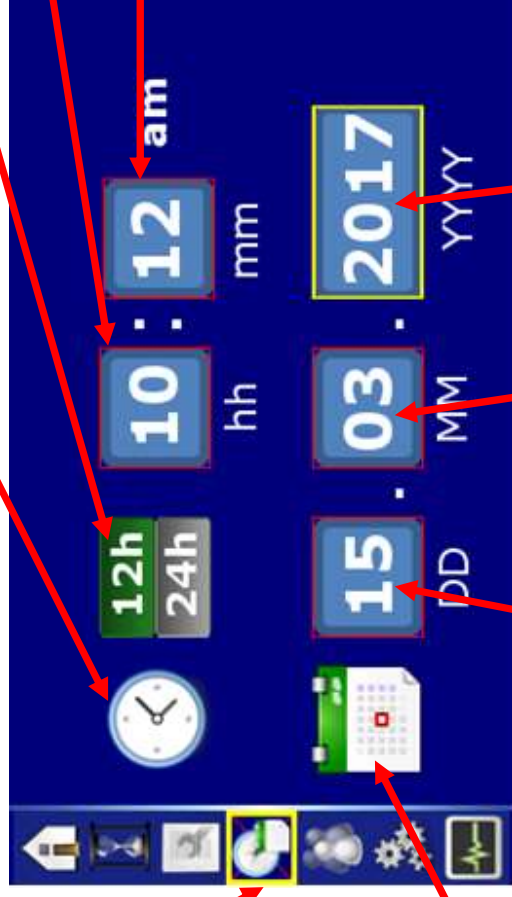
Time and date setting menu

- Respective times and dates can be set in the time/date setting sub-menu.
- Time selection 12 h / 24 h in hours/minutes,
- Date in day/month/year
- Turn the turn-push knob to the adjustable parameters and press. If the border turns green, the parameter can be adjusted. Press again to save. Turn further to the next value to be adjusted.
- Values are saved automatically when exiting the menu item (turning the turn-push knob on the time setting menu item).

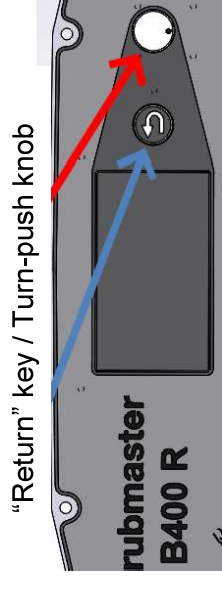
Time setting section

Menu item for setting the time.

Select the softkey via the turn-push knob and press to confirm.



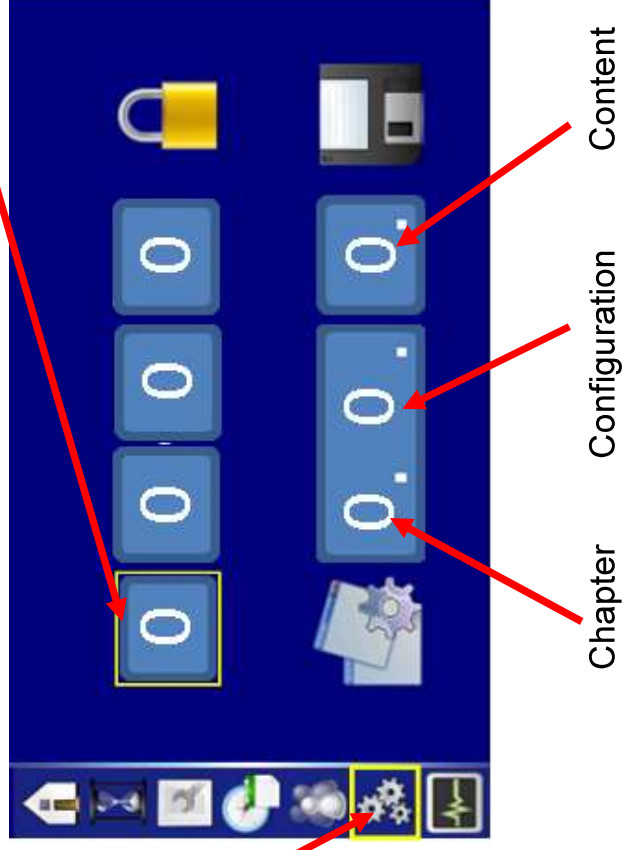
Use the return key on the keypad to exit the menu. The set values are accepted.



Configuration setting menu

- Respective options and values can be adjusted in the system settings sub-menu "configuration menu".
- Adjustable values are divided into operator settings (can be changed by the operator), service settings (can only be changed by service staff using a password, diagnostics plug PN 03006790 or diagnostics device), and non-adjustable values (can only be changed via a software update).
- Turn the turn-push knob to the adjustable parameter and press. If the border turns green, the content can be adjusted. Save the value via the "disk" icon.

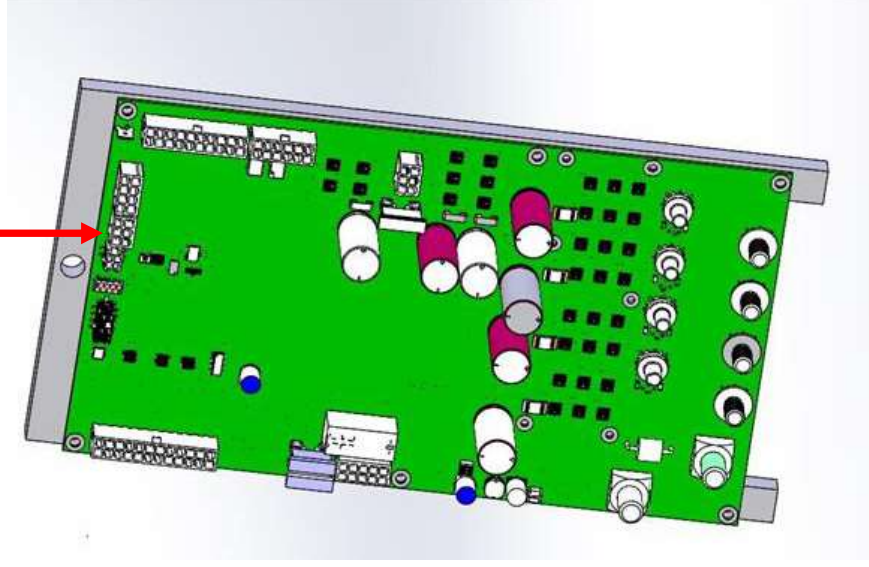
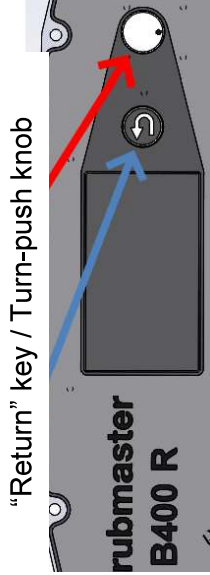
Enter the code here.
The code is calculated using the last 4 digits of the 12-digit serial number of the machine, the last cipher is increased by "1".
These are the positions 9 to 12 of the serial number of the machine.



Menu item for setting the configurations. Select the softkey via the turn-push knob and press to confirm.

- Connect the diagnostics plug PN 03006790 to –A01/X20 to change the protected parameters.

Use the return key on the keypad to go back without saving the currently selected value.



Menu operation:

- Turn the turn-push knob to access the field of the value to be changed.
- Press the turn-push knob to be able to adjust the value (the border turns green).
- Adjust by turning the turn-push knob.
- Press the turn-push knob to exit the field. Turn further to the disk to save the value.

Settings that can be carried out without code or diagnostics plug

Settings that can be carried out by the operator are indicated by not having to enter a code in the top field (or connecting a diagnostics plug) and by the disk displayed next to the configuration setting for saving. Without a code, all settings can be viewed but only released ones can be adjusted.

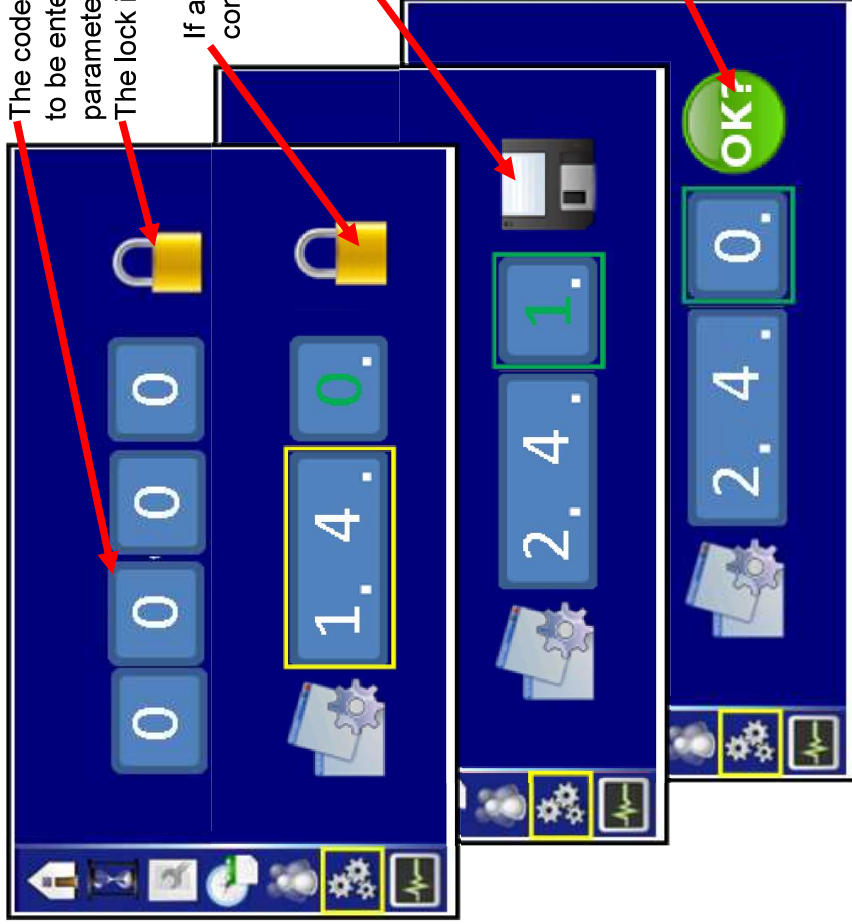
The code or diagnostics plug for setting parameters does not have to be entered or connected if the operator wants to adjust parameters (only released parameters can be adjusted). The lock is locked.

If a locked lock is shown next to the configuration setting, the configuration cannot be changed by the operator.

If a disk is shown next to the configuration setting, the configuration can be changed by the operator. A green number means: currently saved content. A green border means: the value can be adjusted.

The content can be adjusted by turning the turn-push knob. The number turns white and "OK?" appears as a prompt to save this value.

After saving, the disk appears and the number turns green. If saving should not take place, use the "return" key on the keypad or the turn-push knob to exit the setting.



Settings that can only be carried out with code or diagnostics plug

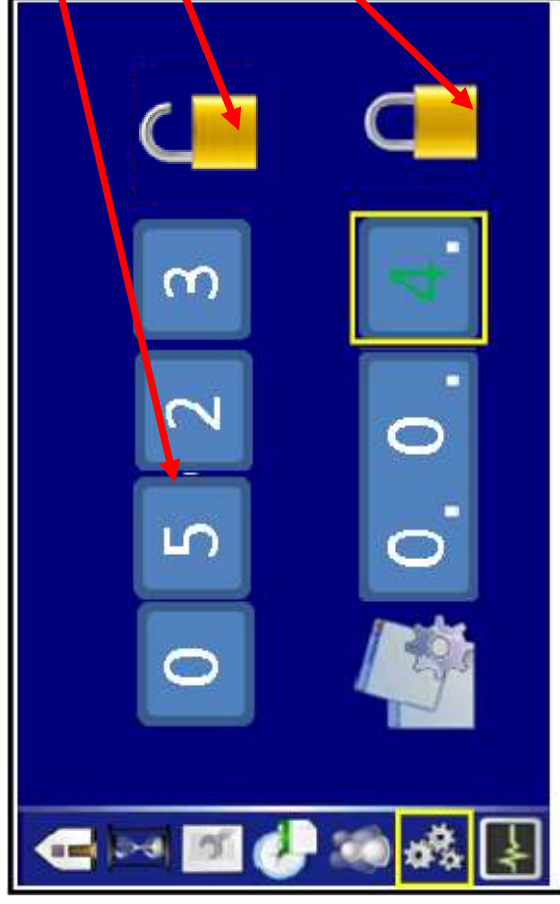
Settings that can be carried out by service staff are indicated by having to enter a code in the top field and by the disk displayed next to the configuration setting for saving.

To avoid having to enter a code, it is also possible to use the diagnostics plug PN 03006790 at connection – A01.X20 of the control unit.

The code is assigned by the HAKO Service during production at the assembly line or when installing a new control unit. The code is calculated from the last four digits of the serial number of the machine, the last cipher plus “1”.

The running sequence number are the positions 8 to 11 of the serial number of the machine.

If no code has been assigned, release for adjusting the configuration can only take place via the service plug.



If parameters are to be changed, the code for setting parameters must be entered (alternatively, diagnostics plug).

The lock is unlocked.

If a locked lock is shown next to the configuration setting, the configuration cannot be changed by service staff.



If a disk is shown next to the configuration setting, the configuration can be changed by service staff. A green number means: the currently saved content.

The content can be adjusted by turning the turn-push knob, the number then turns white and “OK?” appears as a prompt for saving the value. After saving, the disk appears and the number turns green. If saving should not take place, use the “return” key on the keypad to exit the setting.



Resetting the last error and deleting the error memory

- The last ten errors can be displayed with real time and date in the error information sub-menu.
- The last error can be deleted in the main display.
- The display of the last ten errors can be deleted. However, the diagnostics memory cannot be deleted.

Shows the time when the error occurred in:
 24 h display – hh:mm:ss or
 12 h display – pm/am hh:mm:ss

Shows the date when the error occurred in: DD.MM.YYYY

Shows the status of the error (several errors can be active / inactive):

- Service key RED:



Active/Inactive error



- DEL: The error is displayed for 3 seconds after switching on the machine.

Menu item for displaying the last ten errors. Select the softkey via the turn-push knob and press to confirm.

Time	Date	Service Code	Status
13:06:00	31.03.2016	2.5.5.2	Active (wrench icon)
13:06:00	31.03.2016	1.2.4.0	Inactive (i icon)
13:06:00	31.03.2016	1.2.4.0	Inactive (i icon)
13:06:00	31.03.2016	2.5.5.2	Inactive (i icon)
13:05:00	31.03.2016	1.2.3.5	Inactive (i icon)
13:04:00	31.03.2016	1.2.3.6	Inactive (i icon)
13:03:00	31.03.2016	2.5.5.2	Inactive (i icon)
13:02:00	31.03.2016	1.2.3.8	Inactive (i icon)
13:00:00	31.03.2016	2.5.5.2	Inactive (i icon)
12:01:00	31.03.2016	1.2.3.9	Inactive (i icon)

Error display sequence: The last occurred error is displayed at the top, previous errors are displayed underneath.

Service code

Call detailed information

Deleting the last error on the display panel

- Use the cursor to navigate to “DEL” between time / date and the error message of the last occurred error (“DEL” is only visible if the error has been reset, i.e. the service key has been extinguished).
- Press and hold the turn-push knob for 3 seconds to reset the error indicators for the main display screen.
- “DEL” disappears from the display.



Deleting error entries

- The entries in the display (not the diagnostics memory) can only be deleted via the HAKO diagnostics system.
- New error entries are saved chronologically (the last occurred error is displayed at the top position).

After deleting via the HAKO diagnostics tool, a blue display screen appears.

